

The flood map for the selected area is number **18165C0095C**, effective on **2/5/2014**

DYNAMIC MAP



PRINT MAP/
FIRMette

MAP IMAGE



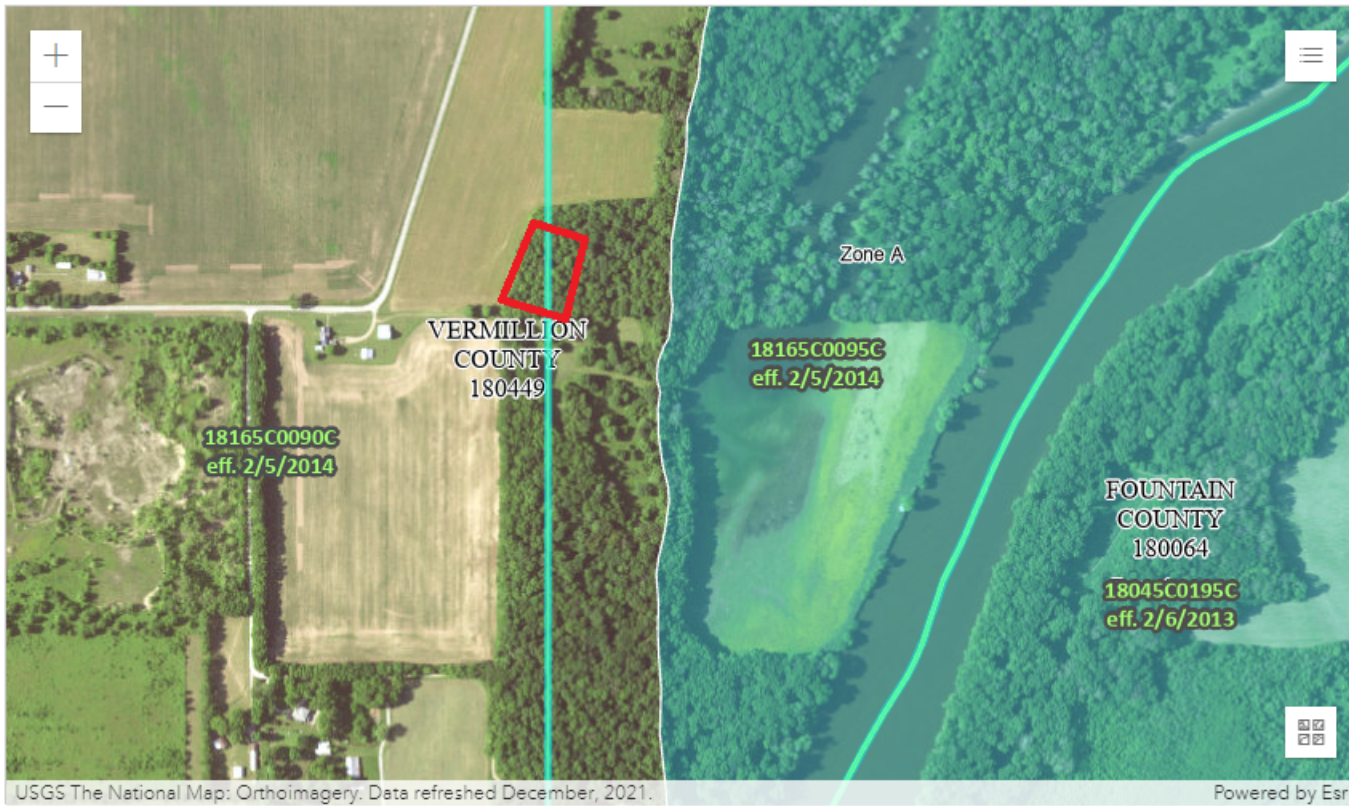
DOWNLOAD
FIRM PANEL

Changes to this FIRM ?

- Revisions (0)
- Amendments (0)
- Revalidations (0)

You can choose a new flood map or move the location pin by selecting a different location on the locator map below or by entering a new location in the search field above. It may take a minute or more during peak hours to generate a dynamic FIRMette.

[Go To NFHL Viewer »](#)



USGS The National Map: Orthoimagery. Data refreshed December, 2021.

Powered by Esri

- PIN**
- Approximate location based on user input and does not represent an authoritative property location
 - Selected Floodmap Boundary
 - Digital Data Available
 - No Digital Data Available
 - Unmapped

- SPECIAL FLOOD HAZARD AREAS**
- Without Base Flood Elevation (BFE) Zone A, V, AP9
 - With BFE or Depth
 - Regulatory Floodway Zone AE, AO, AH, VE, AR
 - 0.2% Annual Chance Flood Hazard, Areas of 1% annual chance flood with average depth less than one foot or with drainage areas of less than one square mile Zone X
 - Future Conditions 1% Annual

- OTHER FEATURES**
- 20.2 Cross Sections with 1% Annual Chance
 - 17.8 Water Surface Elevation
 - Coastal Transect
 - Base Flood Elevation Line (BFE)
 - Limit of Study
 - Jurisdiction Boundary
 - Coastal Transect Baseline
 - Profile Baseline
 - Hydrographic Feature