

The Home Depot # 4131
1700-D FRUITVILLE PIKE, LANCASTER, PA 17601
(717) 239-3980

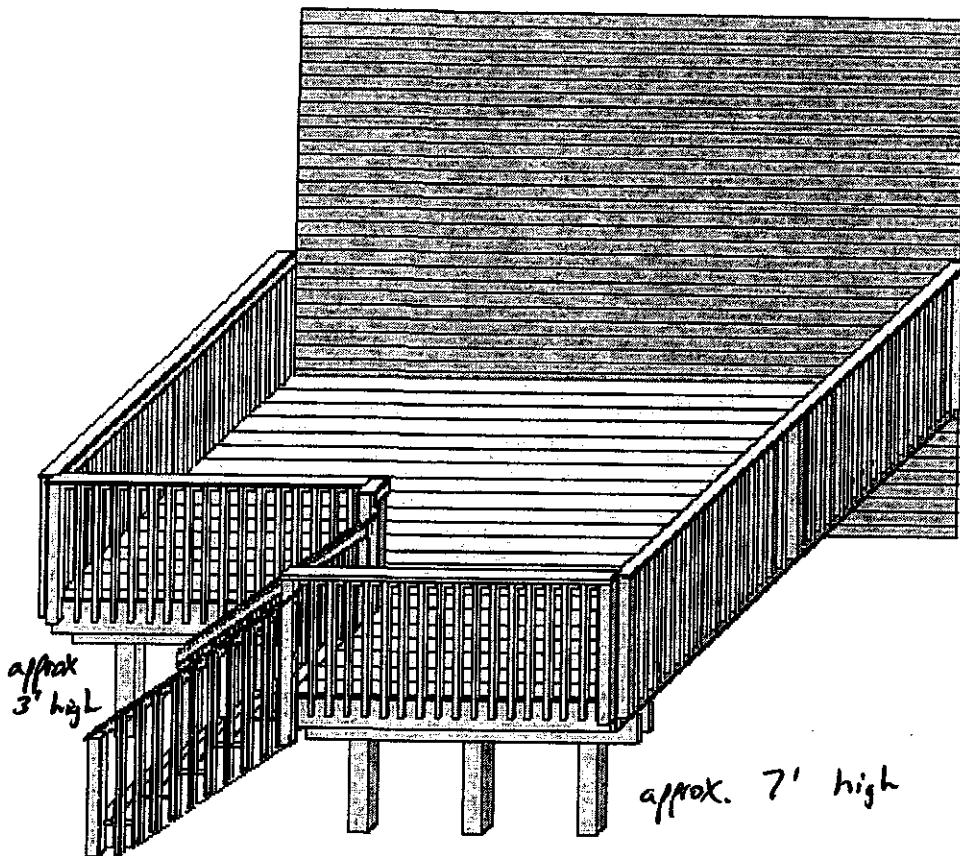
Fri May 04 10:15:03 2007

This Project cannot be priced because not all materials are carried in stock.
See Store Associate for prices on non-stock items shown in Bill-of-Materials.

DAVID GRUEL
DECK 2
192354
3D View

FILE COPY

PENN TOWNSHIP
Approved Construction Documents
Building Permit # 6512
[Signature]



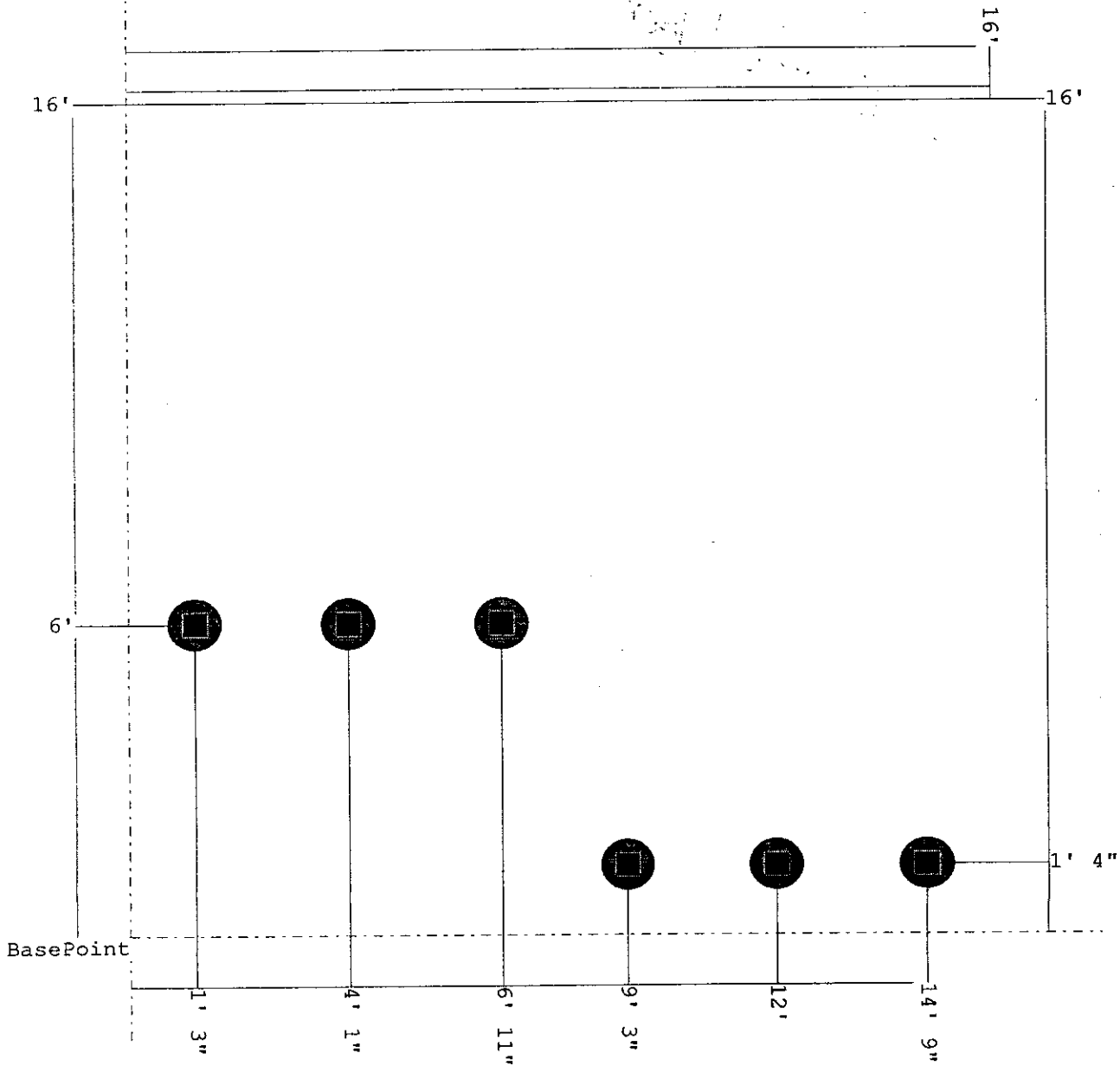
The Home Depot # 4131
1700-D FRUITVILLE PIKE, LANCASTER, PA 17601
(717) 239-3980

Fri May 04 10:15:03 2007

This Project cannot be priced because not all materials are carried in stock.
See Store Associate for prices on non-stock items shown in Bill-of-Materials.

DAVID GRUEL
DECK 2
192354
Post Layout for Deck 1

PENN TOWNSHIP
Approved Construction Documents
Building Permit # 6512
HSS



The Home Depot # 4131
1700-D FRUITVILLE PIKE, LANCASTER, PA 17601
(717) 239-3980
Fri May 04 10:15:03 2007

This Project cannot be priced because not all materials are carried in stock.
See Store Associate for prices on non-stock items shown in Bill-of-Materials.

DAVID GRUEL
DECK 2
192354
Deck Layout

Concealed flange joist hangers @ corners

Joist hangers required

All fasteners shall be corrosion resistant

See deck ledger table

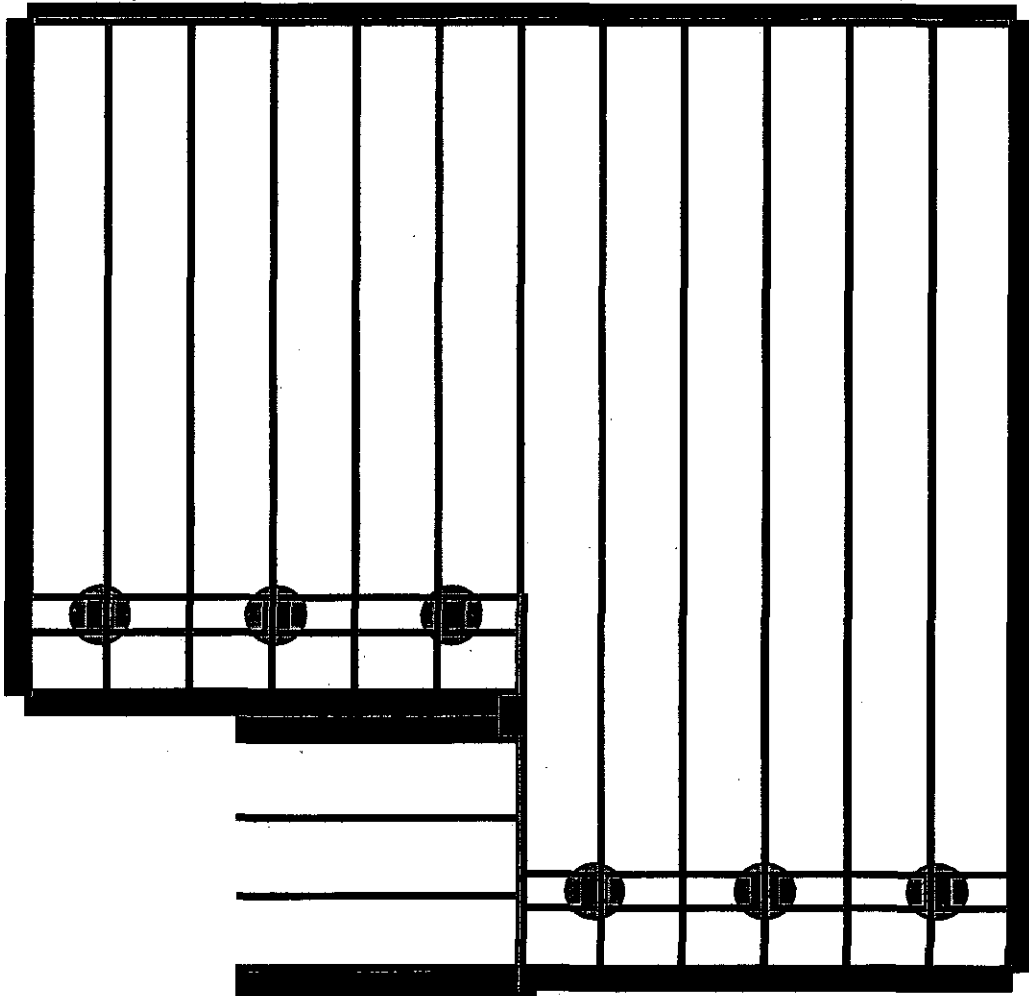
Footers shall be 10" min

Solid blocking between joists above beams

Assemble beams on notched post.

Stair footers

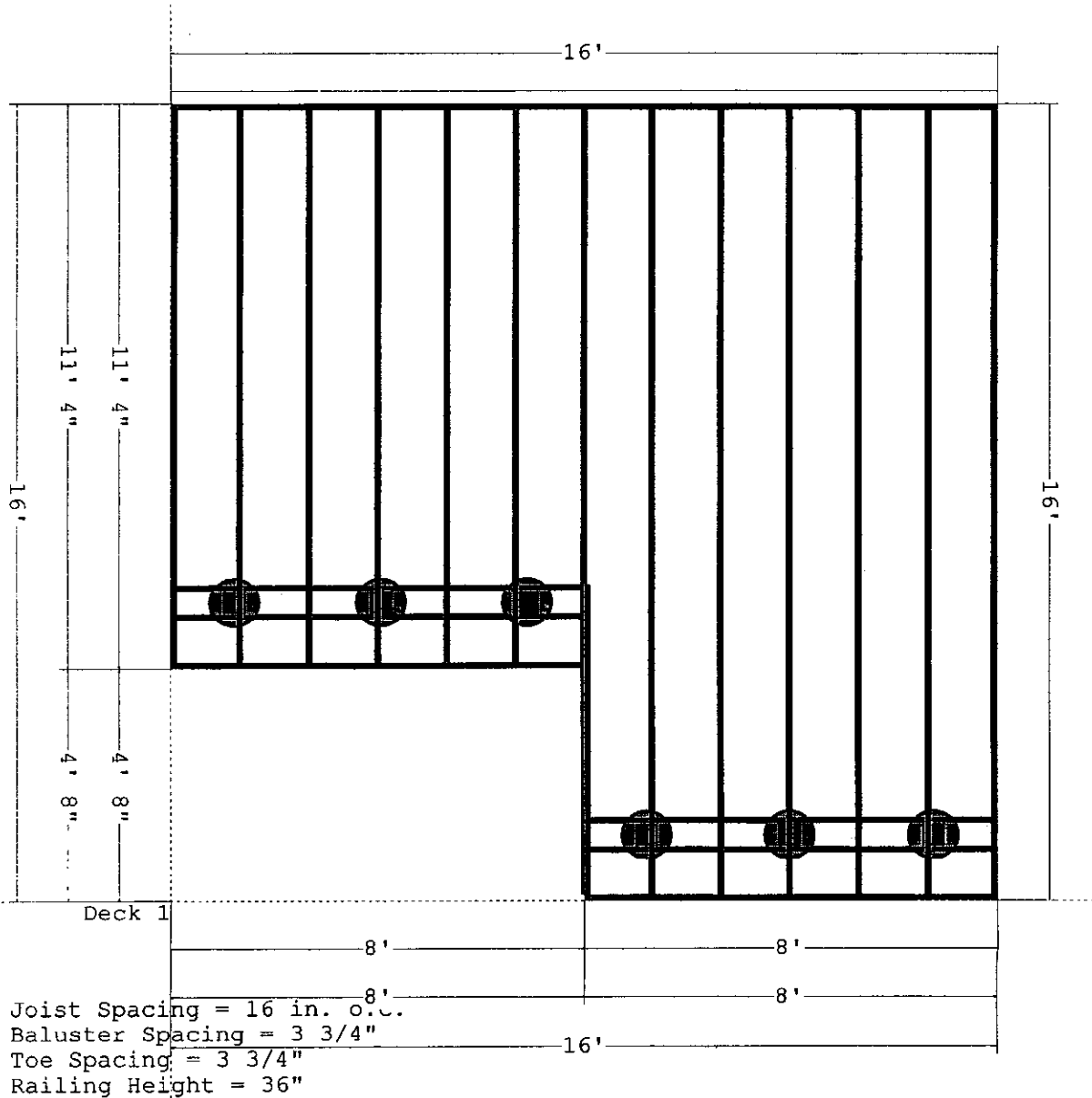
PENN TOWNSHIP
Approved Construction Documents
Building Permit # 6512
HSS



The Home Depot # 4131
1700-D FRUITVILLE PIKE, LANCASTER, PA 17601
(717) 239-3980
Fri May 04 10:15:03 2007
This Project cannot be priced because not all materials are carried in stock.
See Store Associate for prices on non-stock items shown in Bill-of-Materials.

DAVID GRUEL
DECK 2
192354
Deck Dimensions for Deck 1

PENN TOWNSHIP
Approved Construction Documents
Building Permit # 6512
HSS



The Home Depot # 4131
1700-D FRUITVILLE PIKE, LANCASTER, PA 17601
(717) 239-3980
Fri May 04 10:15:38 2007
DAVID GRUEL
DECK 2
192354

Construction Specifications

deck 1:

Construction Method = Beam to Side of Post

Footing Type = In-Ground

Live Load = 40

Dead Load = 10

Decking Spacing = 0 1/4"

Joist Spacing = 16"

Beam Spacing = 168"

Post Spacing = 56"

Decking = 5/4X6 ~~Treated Southern Pine Standard~~

veranda composite Textured slate

Beams = 2X10 Treated Southern Pine No. 2

Joists = 2X10 Treated Southern Pine No. 2

Posts = 6X6 Treated Southern Pine No. 2

Deck Height = 48" *slopes from 7' to 3'*

Diagonal Bracing = Yes

Deck Skirt = No

Joist Overhang = 12"

Beam Overhang = 12"

Decking Deflection Factor = 360

Joist Deflection Factor = 360

Beam Deflection Factor = 360

Pref Decking Size = ML5/4x6x16

Pref Joist Size = 2x10

Pref Beam Size = 2x10

Pref Post Size = 6x6

Diag Brace Height 1 = 24" in

Diag Brace Height 2 = 24" in

Railing 1:

Railing Height = 36"

Baluster Spacing = 3 3/4"

Railing 2:

Railing Height = 36"

Baluster Spacing = 3 3/4"

Railing 4:

Railing Height = 36"

Baluster Spacing = 3 3/4"

Railing 5:

Railing Height = 36"

Baluster Spacing = 3 3/4"

Stair 1:

Step Width = 48"

Step Height = 40"

Step Rise = 8"

Step Run = 11"



Stringers = 2X12 Treated Southern Pine No. 2

Risers = 5/4X6 Thompsonized Southern Pine No. 2

Treads = 5/4X6 ~~Treated Southern Pine Standard~~ *veranda composite textured slate*

Railing 7:

Railing Height = 36"

Baluster Spacing = 3 3/4"

Railing 8:

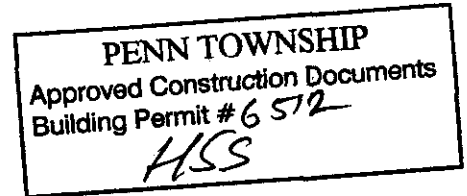
Railing Height = 36"

Baluster Spacing = 3 3/4"

Railing 6:

Railing Height = 36"

Baluster Spacing = 3 3/4"



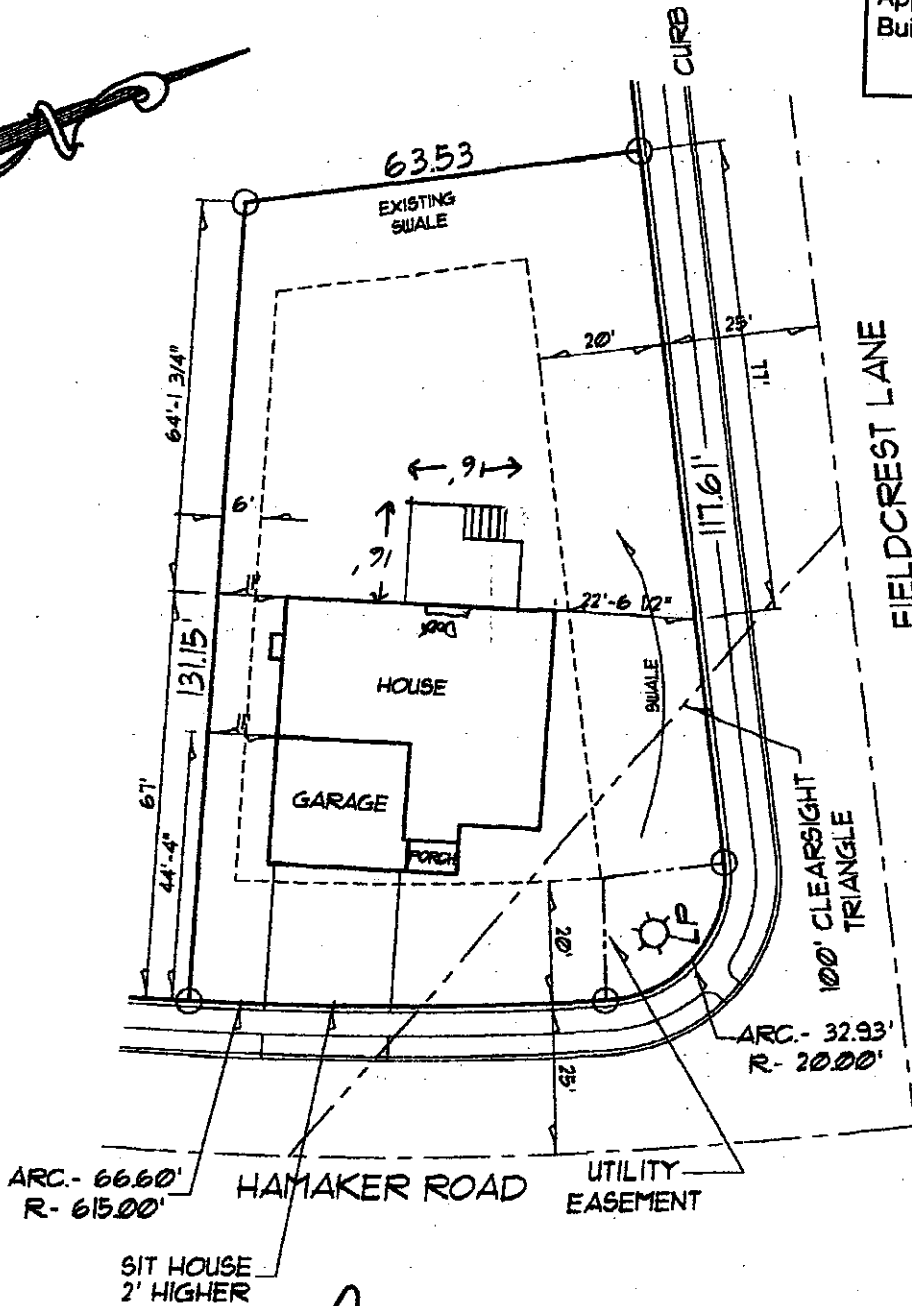
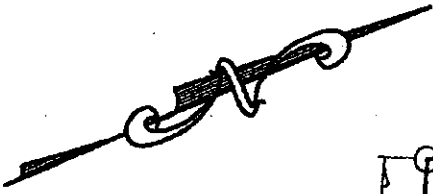
BARONS RIDGE

10,162 SQ. FT.

9'-0" HIGH SUPERIOR WALLS

71

PENN TOWNSHIP
Approved Construction Documents
Building Permit # 6512
HSS



Handwritten signature: Dan M. [unclear]

SCALE:
1" = 30'