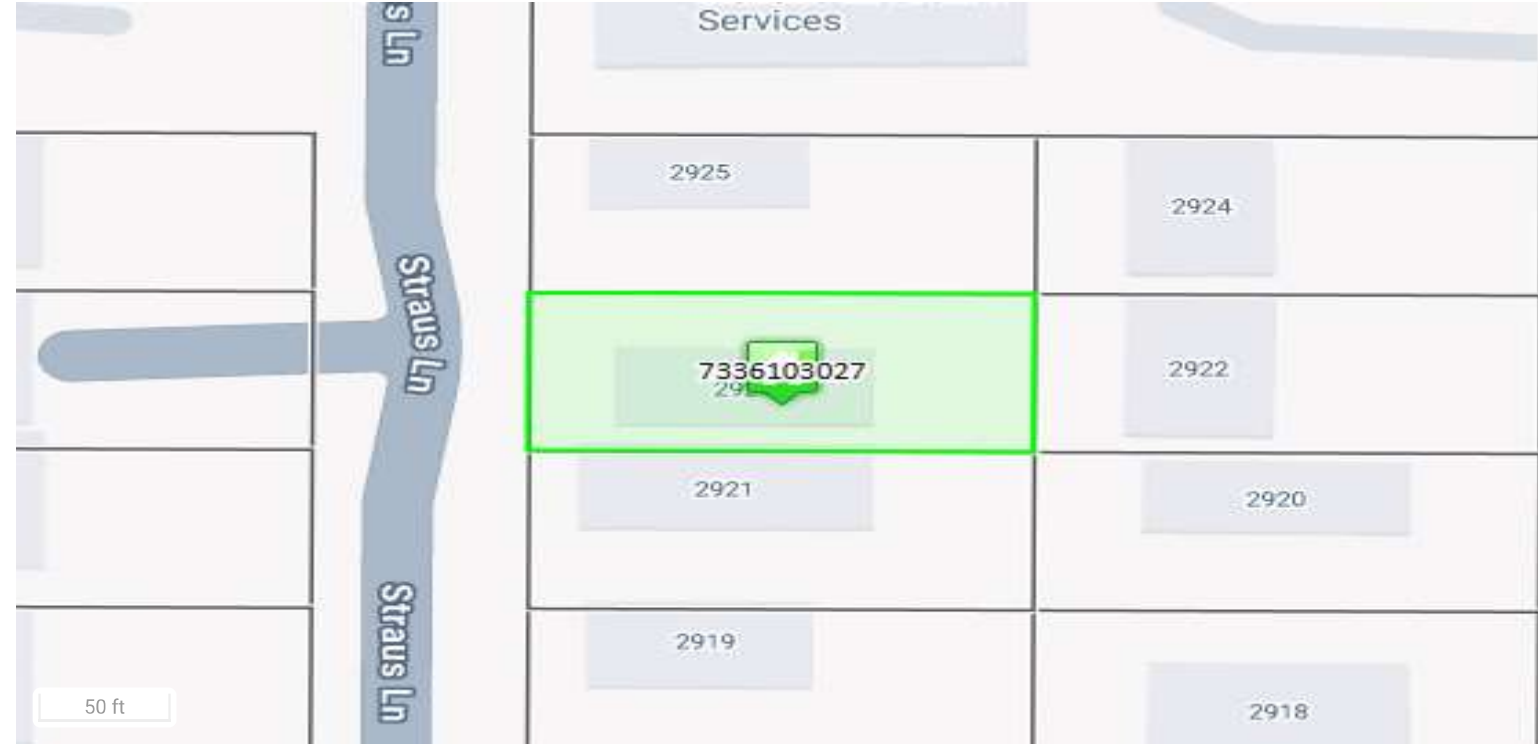


7336103027

2923 STRAUS LN

Total Market Value

\$707,319



OVERVIEW

Owner:	CO TOPAZ BLUE LLC
Mailing Address:	1883 WEST ROYAL HUNTE DR #200-1 CEDAR CITY UT, 84720
Location:	2923 STRAUS LN
Tax Status:	Taxable
Zoning:	R5 HS
Plat No:	R01717
Legal Description:	LOT 6, WLY 10.0 FT OF VAC ALLEY BLK 2 MESA SPRINGS ADD 3

MARKET & ASSESSMENT DETAILS ?

	Market Value	Assessed Value
Land	\$106,680	\$7,150
Improvement	\$600,639	\$40,240
Total	\$707,319	\$47,390

LAND DETAILS

SEQUENCE NUMBER	LAND USE	ASSESSMENT RATE	AREA	MARKET VALUE
1	MULTI-UNITS (4-8)	6.700	8400 SQFT	\$106,680

BUILDINGS DETAILS

^ MULTIPLE - RESIDENTIAL (1)		Market Value \$600,639	
Assessment Rate	6.700	Sprinkler	N
Bldg #	1	Elevator	
Use	MULTIPLE - RESIDENTIAL	Occup 1	352
Year Built	1973	Occup 2	
Area	3776	HVA 1	Hot Water
Class	D	HVA 2	
Quality	Average	Wall Height	8
Stories	2	Land Size	
Perimeter	207	Neigh #	211
# Units			

SALES HISTORY

	SALE DATE	SALE PRICE	SALE TYPE	RECEPTION
+	06/21/2021	\$0	-	221119856
+	05/25/2021	\$0	-	221102797
+	06/30/2017	\$421,800	Trade or Exchange	217077184
+	04/05/2017	\$299,500	Arms-Length Sale	217038905
+	07/08/2002	\$289,900	Trade or Exchange	202109687
+	01/22/2002	\$238,000	Arms-Length Sale	202010843
	06/01/1983	\$0	-	-

TAX ENTITY AND LEVY INFORMATION

County Treasurer Tax Information
 Tax Area Code: **FBY** Levy Year: **2023** Mill Levy: **55.361**

TAXING ENTITY	LEVY	CONTACT NAME/ORGANIZATION	CONTACT PHONE
EL PASO COUNTY	6.985	FINANCIAL SERVICES	(719)520-6400
EPC ROAD & BRIDGE SHARE	0.165	-	(719)520-6498
CITY OF COLORADO SPRINGS	3.554	CITY OF CS-CFO	(719)385-5224
EPC-COLORADO SPGS ROAD & BRIDGE SHARE	0.165	-	(719)520-6498
COLO SPGS SCHOOL DISTRICT #11	40.605	LAURA HRONIK	(719)520-2010
PIKES PEAK LIBRARY DISTRICT	3.140	RANDALL A GREEN	(719)531-6333

TAXING ENTITY	LEVY	CONTACT NAME/ORGANIZATION	CONTACT PHONE
SOUTHEASTERN COLO WATER CONSERVANCY DISTRICT	0.747	JAMES BRODERICK	(719)948-2400
EL PASO COUNTY CONSERVATION DISTRICT	0.000	MARIAH HUDSON	(719)600-4706

MAP SHEET

[Click to view Map Sheet 1](#)

Disclaimer

We have made a good-faith effort to provide you with the most recent and most accurate information available. However, if you need to use this information in any legal or official venue, you will need to obtain official copies from the Assessor's Office. Do be aware that this data is subject to change on a daily basis. If you believe that any of this information is incorrect, please call us at (719) 520-6600.